

Appleton View

at Bolsover



Batley 3 Bedroom Semi-detached

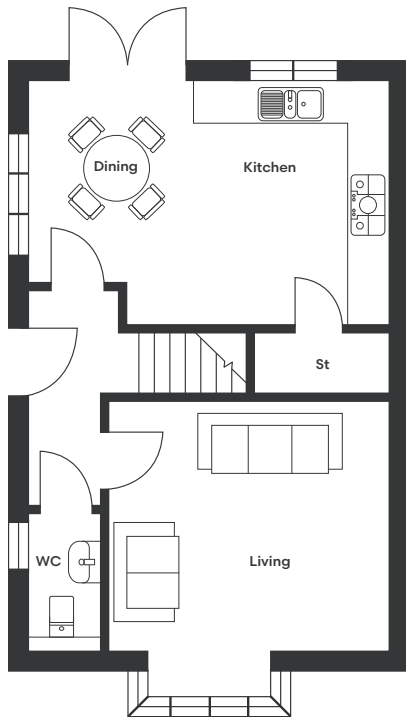
- Living room with open-aspect bay window
- Open-plan kitchen/dining area with luxury German-designed cabinetry with high specification Neff and Miele appliances
- French doors open onto a landscaped rear garden with paved patio
- Stylish ground floor WC with Porcelanosa tiling
- Principal bedroom with ensuite
- Family bathroom and ensuite finished with premium Porcelanosa tiling and high-quality contemporary fittings
- Driveway providing off-street parking, EV charger, and solar panels

Nestled on the edge of the countryside at Appleton View, this beautifully designed three-bedroom home combines modern family living with a thoughtfully landscaped and well-connected setting.

A welcoming entrance leads directly to a comfortable living room, featuring an open-aspect bay window that fills the space with natural light. The contemporary open-plan kitchen/dining area is fitted with luxury German-designed cabinetry, high specification Neff and Miele appliances and features ample storage. French doors open onto the landscaped rear garden with a paved patio, creating a seamless connection between indoor and outdoor living. A stylish downstairs WC finished with Porcelanosa tiling completes the ground floor.

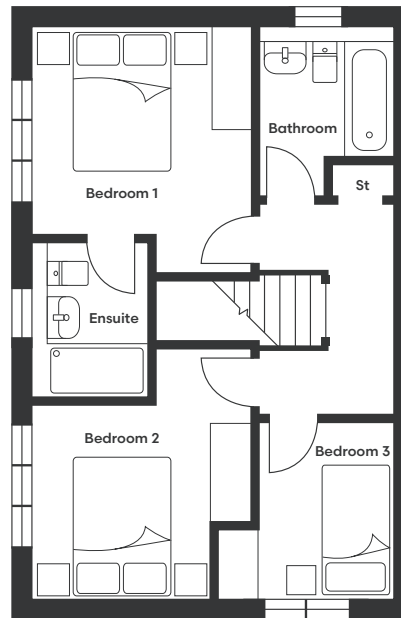
The first floor offers two spacious double bedrooms and a well-sized single, with the principal bedroom benefitting from an ensuite. Both the ensuite and family bathroom are finished to a high standard, featuring Porcelanosa tiling, chrome towel rails, and spa-style dual shower heads throughout.

Batley Floor Plan



Ground Floor

Kitchen/Dining	5370 x 3605	17'7" x 11'10"
Living	4384 x 4200	14'5" x 13'9"
WC	1055 x 2049	3'6" x 6'9"



First Floor

Bedroom 1	3240 x 3635	10'8" x 11'11"		
Bedroom 2	3240 x 2890	10'8" x 9'6"	Ensuite	1685 x 2222 5'6" x 7'3"
Bedroom 3	2615 x 2615	8'7" x 8'7"	Bathroom	2015 x 2512 6'7" x 8'3"



To discover more, contact our Sales Team

Sales Telephone: 07871 183990/07301 087729 | Office Telephone: 01246 575 744 | Email: sales@woodallhomes.co.uk

Disclaimer: All information and images provided are intended for illustrative purposes only and may be subject to change for reasons beyond our control. Wall and roof finishes vary. Handing may vary and some plots have integrated garages. Ask a member of our sales team for a finishes schedule to clarify queries on a specific plot. Floor plans are not to scale and each property shown may not include the features as described in the illustrations. As a consequence, this should be used for guidance only and cannot be relied on to accurately describe any Specified Matters as prescribed by an Order made under the Property Misdescriptions Act 1991, nor constitute a warranty, contract or part thereof.

Appleton View
at Bolsover