

Appleton View

at Bolsover



Burnley 3 Bedroom Detached

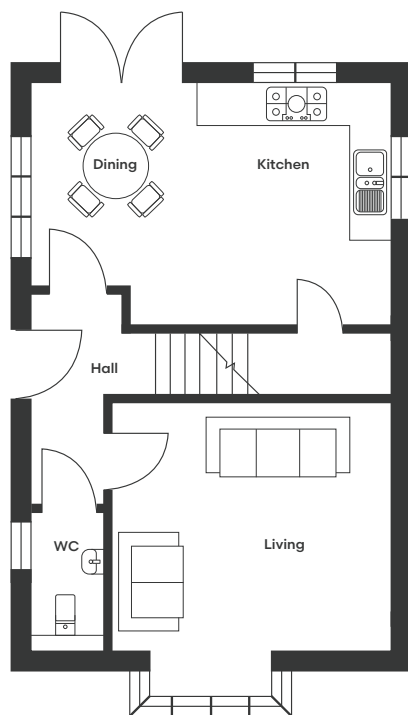
- ❖ **Spacious living room with bay window**
- ❖ **Contemporary kitchen/dining area with luxury German-designed cabinetry, with high specification Neff and Miele appliances, and ample storage**
- ❖ **French doors lead to a landscaped rear garden with paved patio**
- ❖ **Driveway providing off-street parking, EV charger, and solar panels**
- ❖ **Two generous double bedrooms and one well-proportioned single bedroom**
- ❖ **Principal bedroom with ensuite**
- ❖ **All bathrooms finished to a premium standard with Porcelanosa tiling, chrome towel rails, and spa-style dual shower heads**

Set on the countryside edge of Bolsover, Appleton View offers elegant homes within a thoughtfully landscaped setting, with mature trees, hedgerows and green corridors preserved to create a naturally beautiful environment.

The ground floor features a spacious living room with a bay window, alongside a contemporary kitchen/dining area fitted with luxury German-designed cabinetry, with high specification Neff and Miele appliances. Ample utility storage is provided and french doors open onto the landscaped garden, complete with a paved patio. A stylish ground floor WC is finished with premium Porcelanosa tiles, while a driveway to the side of the property provides convenient off-street parking.

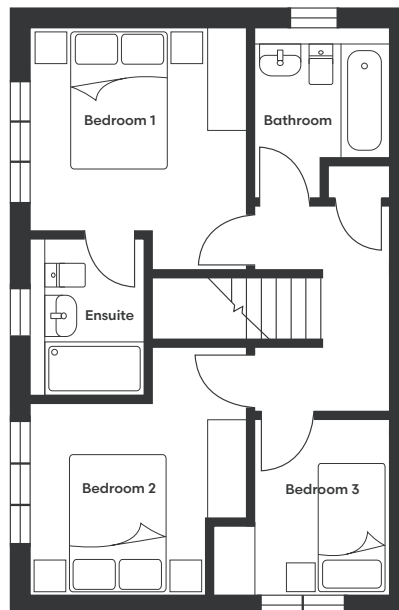
The first floor offers two generous double bedrooms and a well-proportioned single bedroom. The principal bedroom benefits from a luxurious ensuite shower, with all bathrooms finished to a premium standard with Porcelanosa tiling, chrome towel rails and spa-style dual shower heads.

Burnley Floor Plan



Ground Floor

Kitchen/Dining	5370 x 3605	17'7" x 11'10"
Living	4200 x 4384	13'9" x 14'5"
WC	1055 x 2049	3'6" x 6'9"



First Floor

Bedroom 1	3240 x 3635	10'8" x 11'11"			
Bedroom 2	3240 x 2890	10'8" x 9'6"	Bathroom	2015 x 2512	6'7" x 8'3"
Bedroom 3	2615 x 2616	8'7" x 8'7"	Ensuite	1685 x 2222	5'6" x 7'3"



To discover more, contact our Sales Team

Sales Telephone: 07871 183990/07301 087729 | Office Telephone: 01246 575 744 | Email: sales@woodallhomes.co.uk

Disclaimer: All information and images provided are intended for illustrative purposes only and may be subject to change for reasons beyond our control. Wall and roof finishes vary. Handing may vary and some plots have integrated garages. Ask a member of our sales team for a finishes schedule to clarify queries on a specific plot. Floor plans are not to scale and each property shown may not include the features as described in the illustrations. As a consequence, this should be used for guidance only and cannot be relied on to accurately describe any Specified Matters as prescribed by an Order made under the Property Misdescriptions Act 1991, nor constitute a warranty, contract or part thereof.

Appleton View
at Bolsover