

Appleton View

at Bolsover



Petworth 4 Bedroom Detached

- ❖ **Spacious lounge with feature bay window**
- ❖ **Open-plan kitchen/dining area with central island**
- ❖ **Luxury German-designed kitchen with high specification Neff and Miele appliances**
- ❖ **Bifold doors open onto a landscaped rear garden with paved patio**
- ❖ **Garage, side driveway providing off-street parking, EV charger, and solar panels**
- ❖ **Principal bedroom with ensuite**
- ❖ **Family bathroom and ensuite finished with premium Porcelanosa tiling and high-quality, contemporary fittings**

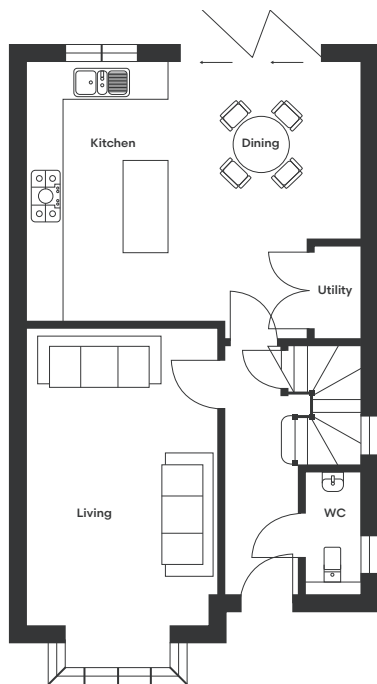
Set within the countryside-edge surroundings of Appleton View, this detached and inviting four-bedroom home offers refined family living within a thoughtfully landscaped and well-connected setting.

A welcoming entrance leads into the heart of the home, where a spacious lounge features a bay window, filling the room with natural light and adding character. The contemporary open-plan kitchen/dining area forms the centrepiece of the home, with a striking central island – perfect for entertaining. The luxury German-designed kitchen is complemented by high-specification Neff and Miele appliances, while bifold doors open onto the landscaped rear garden with a paved patio.

Additional utility storage and a stylish downstairs WC enhance everyday convenience and the property is further complemented by a garage and driveway, offering secure off-street parking.

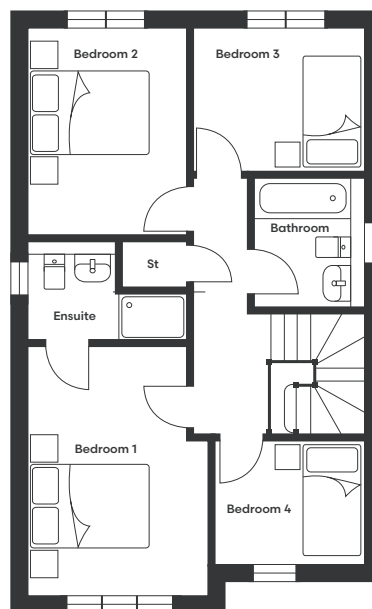
Upstairs, the first floor offers two generous double bedrooms and two well-proportioned single bedrooms with the principal bedroom boasting an ensuite. All bathrooms feature premium Porcelanosa tiling, chrome towel rails, and spa-style dual shower heads.

Petworth Floor Plan



Ground Floor

Kitchen/Dining	5815 x 4503	19'1"x 14'9"
Living	3340 x 5888	10'11"x 19'4"
WC	937 x 2148	3'1"x7'1"



First Floor

Bedroom 1	3115 x 4354	10'3" x 14'3"
Bedroom 2	2741 x 3569	9' x 11'9"
Bedroom 3	2959 x 2445	9'8" x 8'
Bedroom 4	2585 x 2148	8'6" x 7'1"
Ensuite	2741 x 1712	9' x 5'7"
Bathroom	1894 x 2265	6'3" x 7'5"



To discover more, contact our Sales Team

Sales Telephone: 07871 183990/07301 087729 | Office Telephone: 01246 575 744 | Email: sales@woodallhomes.co.uk

Disclaimer: All information and images provided are intended for illustrative purposes only and may be subject to change for reasons beyond our control. Wall and roof finishes vary. Handing may vary and some plots have integrated garages. Ask a member of our sales team for a finishes schedule to clarify queries on a specific plot. Floor plans are not to scale and each property shown may not include the features as described in the illustrations. As a consequence, this should be used for guidance only and cannot be relied on to accurately describe any Specified Matters as prescribed by an Order made under the Property Misdescriptions Act 1991, nor constitute a warranty, contract or part thereof.

Appleton View
at Bolsover