

Appleton View

at Bolsover



Richardson 5 Bedroom Detached

- ❖ **Expansive open-plan kitchen/dining area with luxury German-designed cabinetry with high specification Neff and Miele appliances**
- ❖ **Bifold doors open onto a landscaped rear garden with paved patio**
- ❖ **Two double bedrooms with Jack and Jill ensuite**
- ❖ **Bathroom & ensuites finished with premium Porcelanosa tiling, chrome towel rails, and spa-style dual shower heads**
- ❖ **Luxurious master suite occupying the entire second floor, with open-plan dressing area, ensuite, and additional storage**
- ❖ **Garage, ample driveway, EV charger, and solar panels**
- ❖ **Thoughtfully designed across three floors**

This exceptional detached home at Appleton View combines contemporary design with generous living space across three thoughtfully arranged floors, delivering elegance, practicality, and a sense of refined comfort.

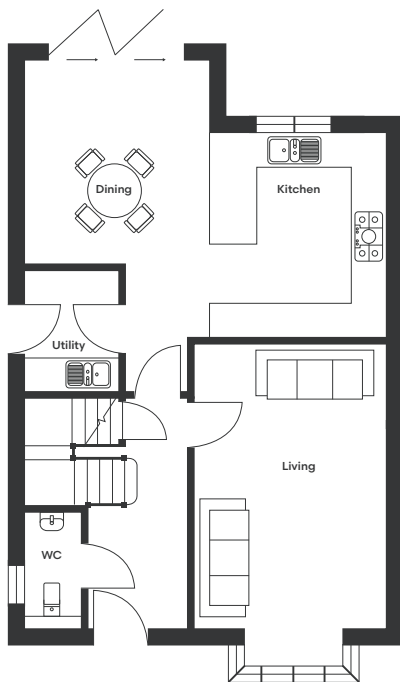
From the welcoming entrance, an expansive open-plan kitchen/dining area is fitted with a luxury German-designed kitchen featuring high specification Neff and Miele appliances. Bifold doors open onto the landscaped rear garden, creating a natural extension of the living space and perfect for entertaining.

A practical utility room with side access is conveniently located off the kitchen, providing everyday functionality.

Upstairs, the first floor features two generous double bedrooms with a Jack and Jill ensuite, alongside two well-proportioned single bedrooms. A stylish family bathroom is finished with Porcelanosa tiling, chrome towel rails and spa-style dual shower heads, combining luxury with practicality.

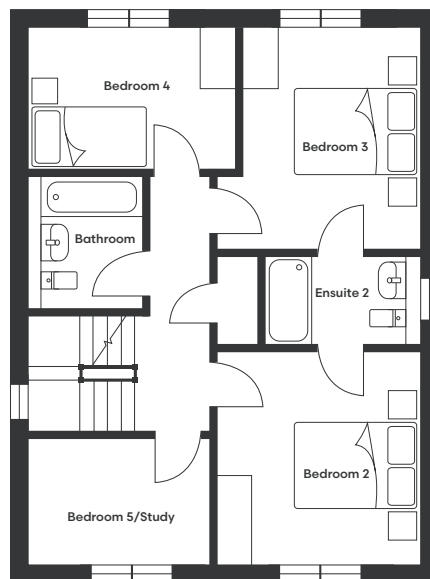
Occupying the entire second floor, the luxurious master suite offers a spacious open-plan dressing area, private ensuite and additional storage, providing a secluded and elegant retreat. The home is further complemented by a garage and ample driveway, completing this beautifully balanced and thoughtfully designed residence.

Richardson Floor Plan



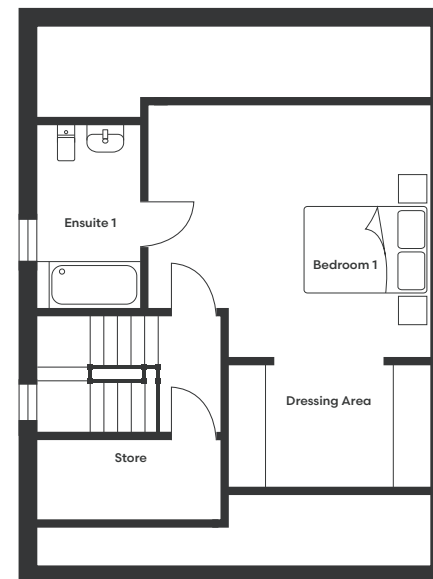
Ground Floor

Kitchen/Dining	6603 x 6078	21'8" x 19'11"
Living	3496 x 5875	11'6" x 19'3"
WC	1022 x 2122	3'4" x 7'
Utility	1725 x 2225	5'8" x 7'4"



First Floor

Bedroom 2	3422 x 3602	11'3" x 11'10"
Bedroom 3	3423 x 3740	11'3" x 12'3"
Bedroom 4	3500 x 2375	11'6" x 7'10"
Bedroom 5/Study	3065 x 2122	10'1" x 7'
Bathroom	1913 x 2273	6'3" x 7'5"
Ensuite 2	2607 x 1505	8'7" x 4'11"



Second Floor

Bedroom 1	4770 x 4291	15'8" x 14'1"
Ensuite 1	1718 x 2873	5'8" x 9'5"
Dressing Area	3381 x 2005	11'1" x 6'10"



To discover more, contact our Sales Team

Sales Telephone: 07871 183990/07301 087729 | Office Telephone: 01246 575 744 | Email: sales@woodallhomes.co.uk

Disclaimer: All information and images provided are intended for illustrative purposes only and may be subject to change for reasons beyond our control. Wall and roof finishes vary. Handing may vary and some plots have integrated garages. Ask a member of our sales team for a finishes schedule to clarify queries on a specific plot. Floor plans are not to scale and each property shown may not include the features as described in the illustrations. As a consequence, this should be used for guidance only and cannot be relied on to accurately describe any Specified Matters as prescribed by an Order made under the Property Misdescriptions Act 1991, nor constitute a warranty, contract or part thereof.

Appleton View
at Bolsover