

Appleton View *at Bolsover*



Sudbury 3 Bedroom Detached Bungalow

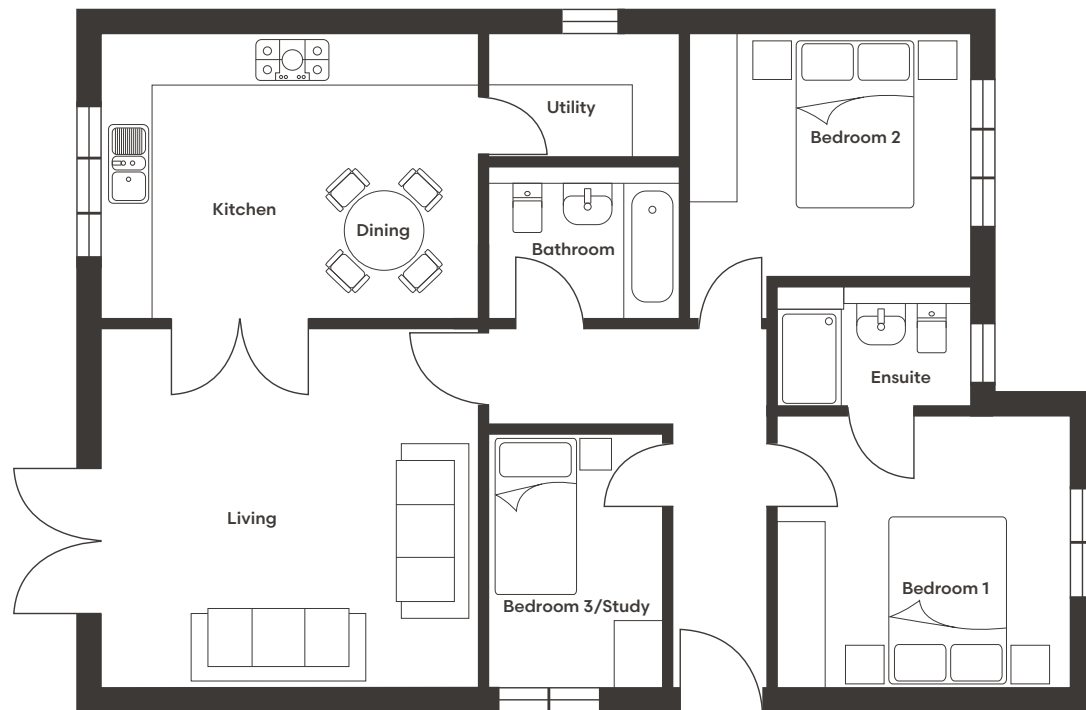
- ❖ **Elegant open-plan kitchen/dining area with luxury German-designed cabinetry with high specification Neff and Miele appliances**
- ❖ **Patio doors open onto a landscaped garden with paved patio**
- ❖ **Two generous double bedrooms, principal with ensuite and a single bedroom or study**
- ❖ **Bathroom and ensuite finished with premium Porcelanosa tiling, chrome towel rails, and spa-style dual shower heads**
- ❖ **Garage, driveway providing off-street parking, EV charger, and solar panels**

Set within the countryside-edge setting of Appleton View, The Sudbury is a thoughtfully designed bungalow offering refined single-storey living within a beautifully landscaped environment that embraces open space and natural surroundings.

A welcoming entrance leads through to an elegant open-plan kitchen/dining area, fitted with luxury German-designed cabinetry, high-specification Neff and Miele appliances, and a dedicated utility room. Double doors open from the kitchen/diner into the main living room, creating a wonderful sense of openness while retaining the flexibility to enjoy private, quieter spaces when desired. Patio doors from the living area open onto the landscaped garden with a paved patio, forming a seamless connection between indoor and outdoor living.

The accommodation includes two generous double bedrooms, with the principal bedroom benefitting from an ensuite, alongside a versatile single bedroom or study - ideal for home working or guest accommodation. The bathroom and ensuite are finished to a high standard, featuring Porcelanosa tiling, chrome towel rails, and spa-style dual shower heads, completing this beautifully balanced and thoughtfully designed home. The property is further complemented by a garage and driveway.

Sudbury Floor Plan



Kitchen/Dining	4651 x 3512	15'3"x 11'6"
Utility	1500 x 2380	4'11 x 7'10"
Living	4439 x 4651	14'7 x 15'3"

Bedroom 1	3615 x 3340	11'10" x 10'11"
Bedroom 2	3469 x 2997	11'5" x 9'10"
Bedroom 3 / Study	2215 x 3141	7'1" x 10'4"
Bathroom	2380 x 1897	7'8" x 6'3"
Ensuite	2378 x 1498	7'10" x 4'11"

To discover more, contact our Sales Team

Sales Telephone: 07871 183990/07301 087729 | Office Telephone: 01246 575 744 | Email: sales@woodallhomes.co.uk

Disclaimer: All information and images provided are intended for illustrative purposes only and may be subject to change for reasons beyond our control. Wall and roof finishes vary. Handing may vary and some plots have integrated garages. Ask a member of our sales team for a finishes schedule to clarify queries on a specific plot. Floor plans are not to scale and each property shown may not include the features as described in the illustrations. As a consequence, this should be used for guidance only and cannot be relied on to accurately describe any Specified Matters as prescribed by an Order made under the Property Misdescriptions Act 1991, nor constitute a warranty, contract or part thereof.



Appleton View
at Bolsover