

Appleton View

at Bosover



Winster 5 Bedroom Detached

- ❖ **Detached five-bedroom, three-storey home**
- ❖ **Spacious open-plan kitchen/dining area with luxury German-designed cabinetry with high specification Neff and Miele appliances**
- ❖ **Bifold doors open onto a landscaped rear garden with paved patio**
- ❖ **Separate living room and dedicated study**
- ❖ **Master bedroom with dressing room and ensuite, second double bedroom with ensuite**
- ❖ **Second floor: Spacious double bedroom with large shower room**
- ❖ **All bathrooms and ensuites finished with premium Porcelanosa tiling, chrome towel rails, and spa-style dual shower heads**
- ❖ **Garage, ample driveway, EV charger, and solar panels**

Set within the countryside-edge surroundings of Appleton View, this impressive five-bedroom, three-storey home offers expansive and flexible living designed for modern family lifestyles.

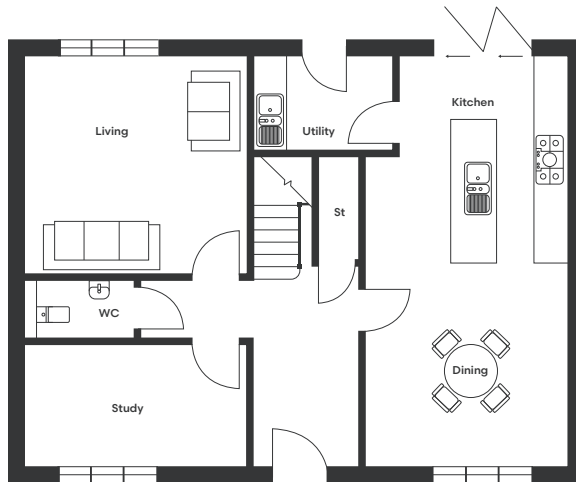
The ground floor is introduced by a welcoming entrance hallway, complemented by practical storage. The spacious open-plan kitchen/dining area is fitted with luxury German-designed cabinetry, a striking central island, and high-specification Neff and Miele appliances - ideal for both everyday living and entertaining. Bifold doors from the dining area open onto the landscaped rear garden with a paved patio. A separate living room, study, and utility room provide excellent versatility, while a stylish downstairs WC completes the ground floor. The property is further enhanced by a garage and private driveway positioned to the side.

Arranged across the upper floors are four generous double bedrooms and a well-proportioned fifth bedroom. The first floor hosts the principal bedroom with dressing area and ensuite, a second large double bedroom with its own ensuite, and a third double bedroom, all served by a beautifully appointed family bathroom.

The second floor offers a further spacious double bedroom with ample storage, a single bedroom, and a large shower room serving both rooms.

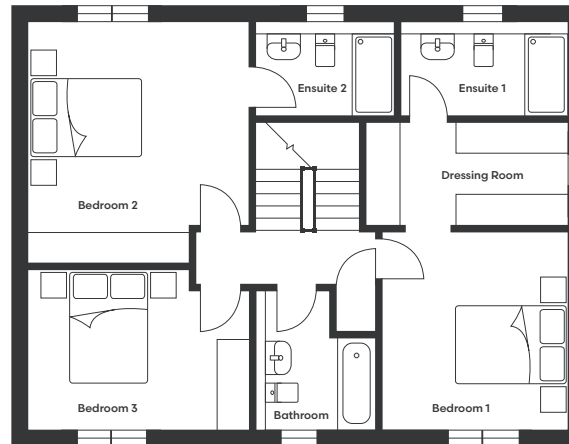
All bathrooms and ensuites throughout the home are finished to an exceptional standard, featuring premium Porcelanosa tiling, chrome towel rails, and indulgent spa-style dual shower heads, completing this luxurious family residence.

Winster Floor Plan



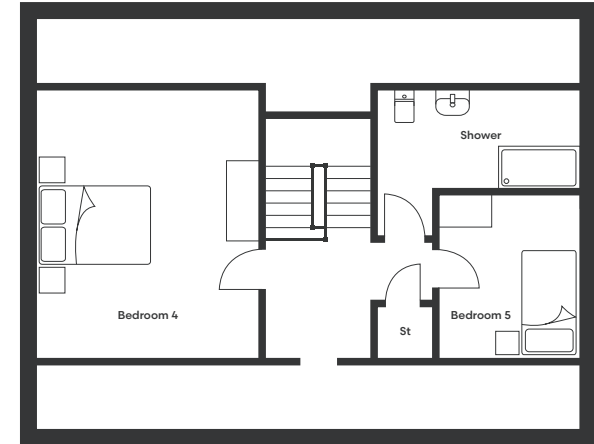
Ground Floor

Kitchen/Dining	3729 x 7615	12'3" x 25'
Living	4111 x 4010	13'6" x 13'6"
Study	4111 x 2304	13'6" x 7'7"
WC	2026 x 1071	6'8" x 3'6"
Utility	1950 x 1802	6'5" x 5'11"



First Floor

Bedroom 1	3604 x 3360	11'10" x 11'
Bedroom 1 Dressing Room	3739 x 2068	12'3" x 6'9"
Bedroom 2	4121 x 4532	13'6" x 14'10"
Bedroom 3	4146 x 2968	13'7" x 9'9"
Bathroom	2279 x 2589	7'6" x 8'6"
Ensuite 1	3118 x 1812	10'3" x 5'11"
Ensuite 2	2621 x 1812	8'7" x 5'11"



Second Floor

Bedroom 4	4121 x 5028	13'6" x 16'6"
Bedroom 5	2622 x 3057	8'7" x 10'
Shower	3739 x 2731	12'3" x 9'

To discover more, contact our Sales Team

Sales Telephone: 07871 183990/07301 087729 | Office Telephone: 01246 575 744 | Email: sales@woodallhomes.co.uk

Disclaimer: All information and images provided are intended for illustrative purposes only and may be subject to change for reasons beyond our control. Wall and roof finishes vary. Handing may vary and some plots have integrated garages. Ask a member of our sales team for a finishes schedule to clarify queries on a specific plot. Floor plans are not to scale and each property shown may not include the features as described in the illustrations. As a consequence, this should be used for guidance only and cannot be relied on to accurately describe any Specified Matters as prescribed by an Order made under the Property Misdescriptions Act 1991, nor constitute a warranty, contract or part thereof.



Appleton View
at Bolsover